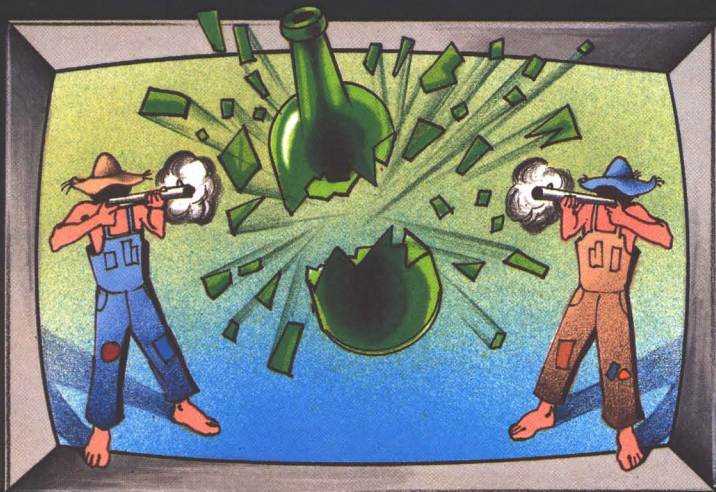


# Bally®

PROFESSIONAL

# VIDEOCADE™

CARTRIDGE



## DOG PATCH 2010

A real down-home skeet shoot! The target spins through the air as you raise your shotgun and fire. Good shooting keeps the target bouncing between the players. An explosive 12-gauge juggling act builds a big score! Blast the target past your opponent to score points. Play long or short games and vary the number of targets. 1 or 2 players.



Copyright © 1981 Astrovision, Inc. All Rights Reserved.

VIDEOCADE #2010

DOG PATCH

LOADING INSTRUCTIONS

1. Turn on your Bally Professional Arcade and TV set, then select channel 3 or 4.
2. Connect the hand controls by inserting control #1 into the first jack on the back left side (as you face the front of the Arcade). From left to right, the jacks connect to players 1, 2, 4 and 3.
3. Insert the game cartridge, label side up, into the cartridge slot. Press it down firmly to lock it into position.
4. Press the RESET button, and the menu of games will be displayed.

Copyright (c) 1981 Astrovision, Inc.  
All Rights Reserved

## DOG PATCH (2 players)

Take aim and fire at a can that is tossed into the air. In this down home skeet shoot, score points for every can you hit; extra points are awarded for knocking it over the head of your opponent.

### STARTING THE GAME

Choose Dog Patch by pressing 1 on the keypad or by using remote game selection (pull the trigger on hand control #1, turn the knob until 1 appears on the screen, then pull the trigger again).

Enter the number of cans (1-99). If you enter a number that is less than 10, press the = sign to start the game.

### PLAYING THE GAME

The hand control functions for Dog Patch are:

Trigger	Fires the shot.
Knob	Controls the angle of the gun.
Joystick	Has no function.

The object of the game is to score the highest number of points by targeting and hitting the most cans. With two good marksmen, the can will bounce back and forth several times before being shot to the other side of the screen.

The cans are automatically tossed into the air by the person shown in the lower center of the screen. Player #1 is shown on the left, with player #2 on the right. Scores are located directly above the players.

At the bottom of the screen, you will see the number of cans remaining to be tossed. The word, BONUS, located at the upper center of the screen, refers to the number of hits on each can.

### SCORING

Every time a player hits a can, one point is awarded. A can may be hit more than once by either or both players and, as a result, each player will receive more points.

When a can is hit over the opponent, 12 points are awarded. If it is hit twice, 14 points are awarded; if hit three times,

the score increases by 16 points.

Bouncing the can between the shots of both players will give each player extra points.

The winner is the player with the highest score when there are no cans remaining to be tossed.

#### PLAYING AGAIN

To play Dog Patch again, press the RESET button (or pull the trigger on hand control #1) and follow the instructions for starting the game.

## LIMITED WARRANTY

Astrovision, Inc., 6460 Busch Blvd., Suite 215, Columbus, OH, 43229 (the "Warrantor") hereby warrants, to the original purchaser only, that this product will be free from defects in materials and workmanship, under normal use, for a period of 90 days from the date of purchase.

The Warrantor shall have no liability or responsibility to purchaser or any other person or entity with respect to any liability, loss or damage caused or alleged to be caused directly or indirectly by this product, including but not limited to any interruption of service, loss of business and anticipatory profits or consequential damages resulting from the use or operation of this product.

If during this 90-day period a defect in this product should occur, the product may be returned to: Astrovision, Inc., or to an authorized Astrovision, Inc. dealer and Astrovision, Inc. will replace this product without charge.

When requesting performance under the terms of this warranty, the original purchase date must be established by the customer by means of a bill of sale, invoice, or other acceptable documentation.

This warranty gives you specific legal rights, and you may also have other rights which vary from state to state.

Some states do not allow the exclusion or limitation of incidental or consequential damages, so the above limitations or exclusions may not apply to you.

**ASTROVISION INC.**

**6460 BUSCH BLVD., SUITE 215  
COLUMBUS, OHIO 43229**